

Descrizione: Set di paletti rosso/bianco

Codice articolo: KPS-TG-2-RW

GTIN: 4250912313125

Numero di tariffa doganale: 73089098

Larghezza (mm): 658

Altezza (mm): 1130

Profondità/Lunghezza (mm): 426

Peso netto (kg): 80

Peso lordo (kg): 82,65

Materiale: acciaio

Superficie: zincata

verniciato a polvere

Colore: nero - bianco

Segno di avvertimento: segno di avvertimento rosso

Campo di applicazione: uso interno ed esterno Montaggio:
autoportante

La consegna è: smontato

Marca: Crashstop

Eclass 10.1 Nr.: 40020209

Eclass 11.1 Nr.: 40020209

Codice classe ETIM: EC004581



Descrizione: Carrello per il trasporto
Numero articolo: KPS-TG-2
GTIN: 4250912312814
Numero di tariffa doganale: 73269098
Larghezza (mm): 600
Profondità/Lunghezza (mm): 400
Altezza (mm): 965
Peso netto (kg): 15,83
Materiale: acciaio
Superficie: verniciata a polvere
Colore: nero
Campo di applicazione: uso interno ed esterno
Approvazione / Certificazione: certificato TÜV
(conforme a DGUV 108-007 /
precedentemente BGR 234)



Descrizione: Set catena rosso-bianco
Metro: 25mt



Descrizione: Piastra base mobile a 8 angoli Codice
articolo: MPF

GTIN: 4250912305519

Numero di tariffa doganale: 39269097 Forma:
ottagonale

Larghezza (mm): 380

Profondità/Lunghezza (mm): 380

Altezza (mm): 65

Peso netto (kg): 7.378

Peso lordo (kg): 8.506

Materiale: granuli di gomma

Colore: nero

Campo di applicazione: uso interno ed esterno

Intervallo di temperatura: da -20° a +40°

Montaggio: autoportante

Eclass 10.1 Nr.: 40020218

Eclass 11.1 Nr.: 40020218

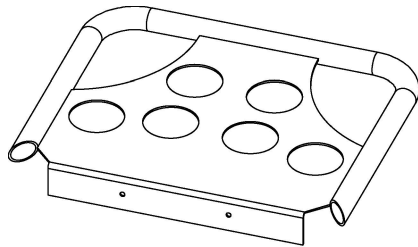
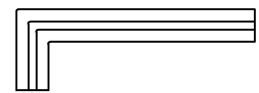
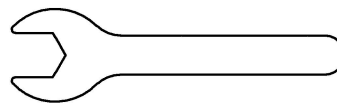
Codice classe ETIM: EC004581



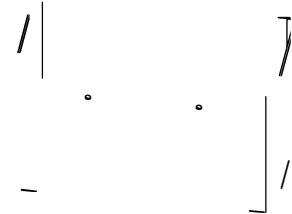
MANUALE E ISTRUZIONI DI MONTAGGIO

KPS-TG-2-RW

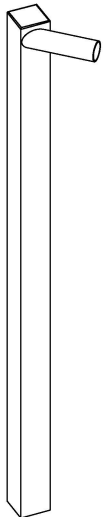




A x 1



B x 1

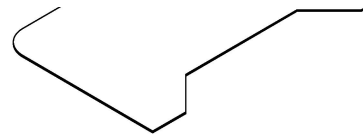
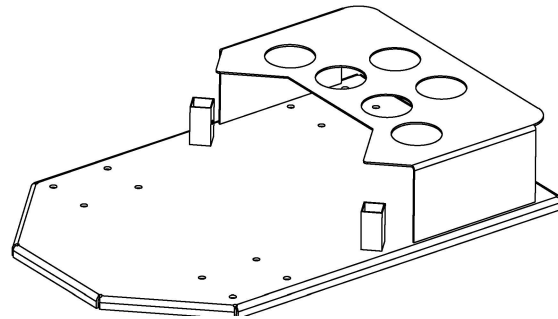


C x 1

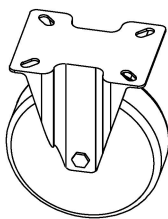


D x 1

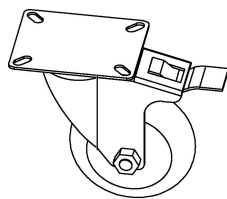
E x 1



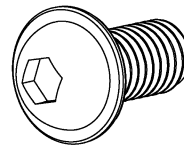
F x 1



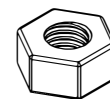
G x 2



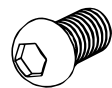
H x 2



**I x 18
(M8*16)**



**J x 16
(M8)**



**K x 4
(M6*12)**



**L x 2
(M8)**



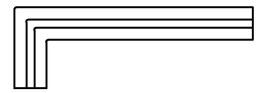
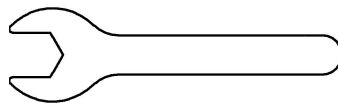
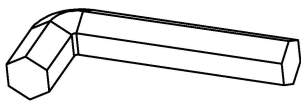
**M x 1
(M4)**



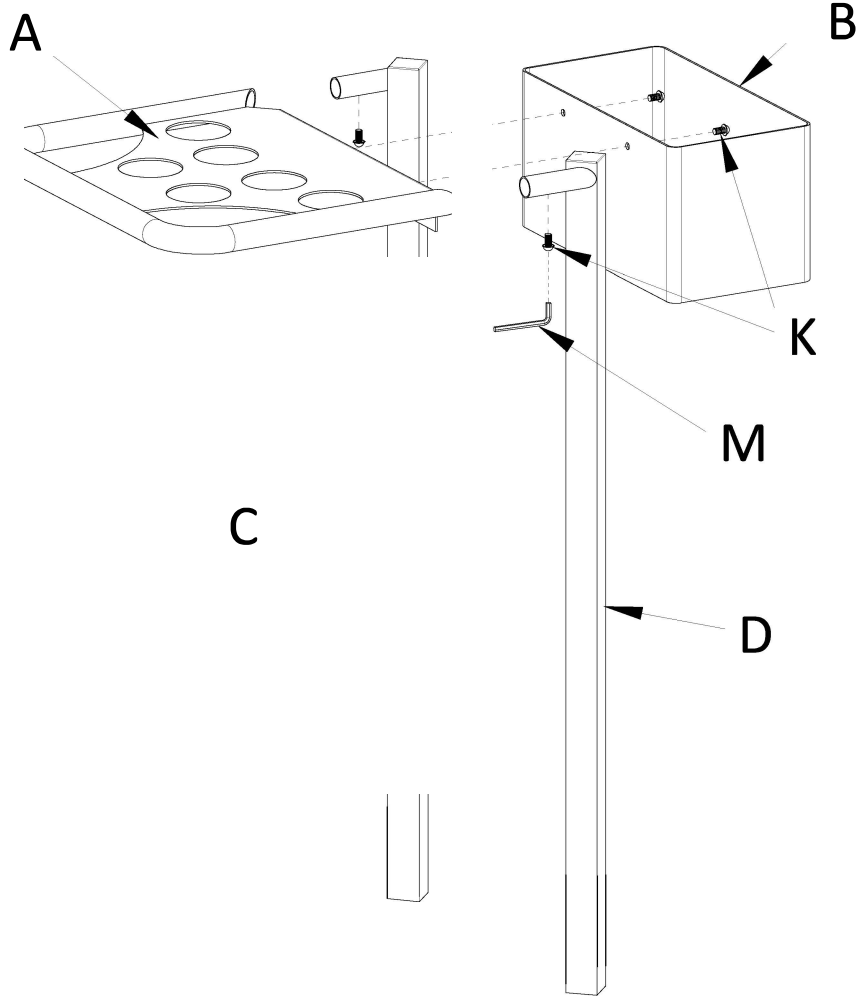
**N x 1
(M5)**



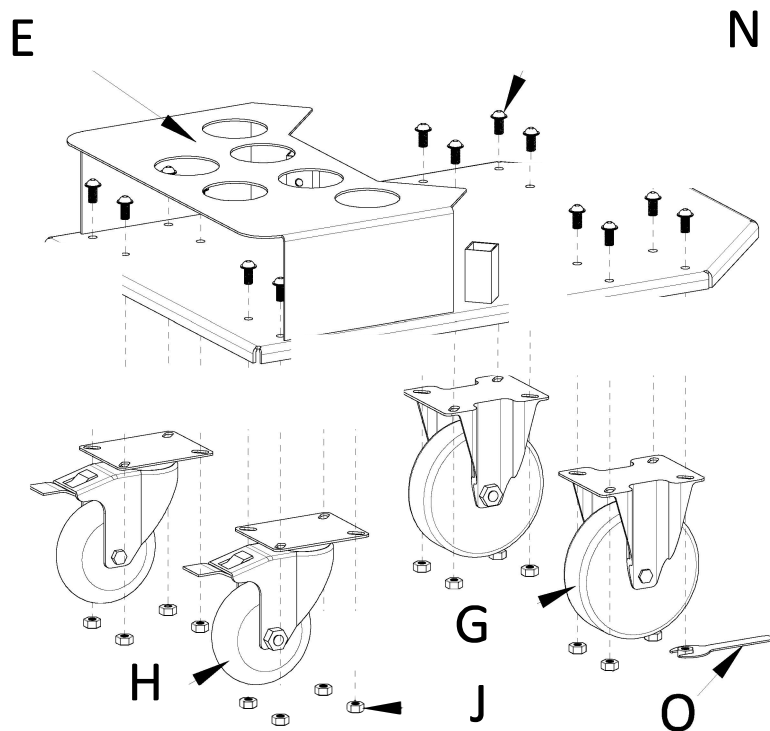
O x 1

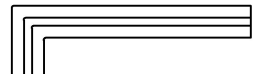
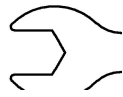
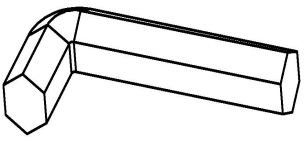


1.

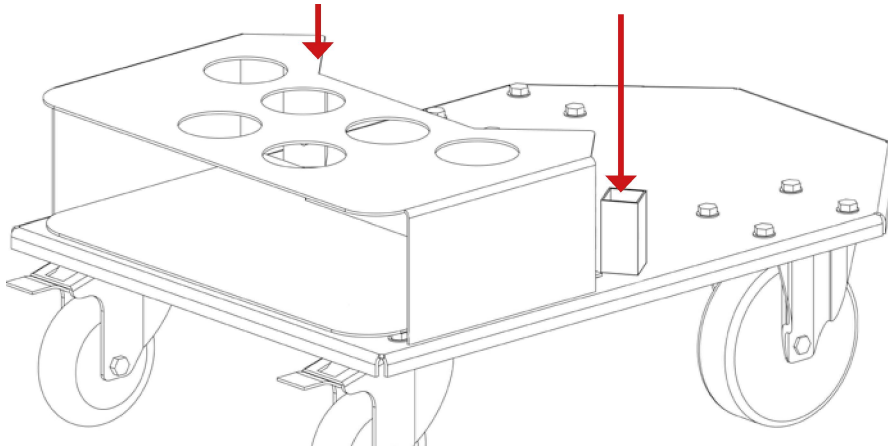
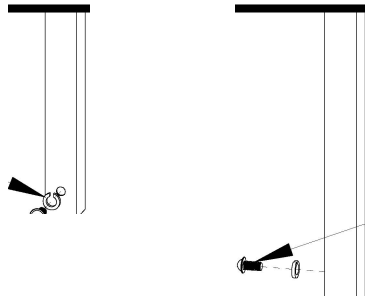


2.





3.



4.

